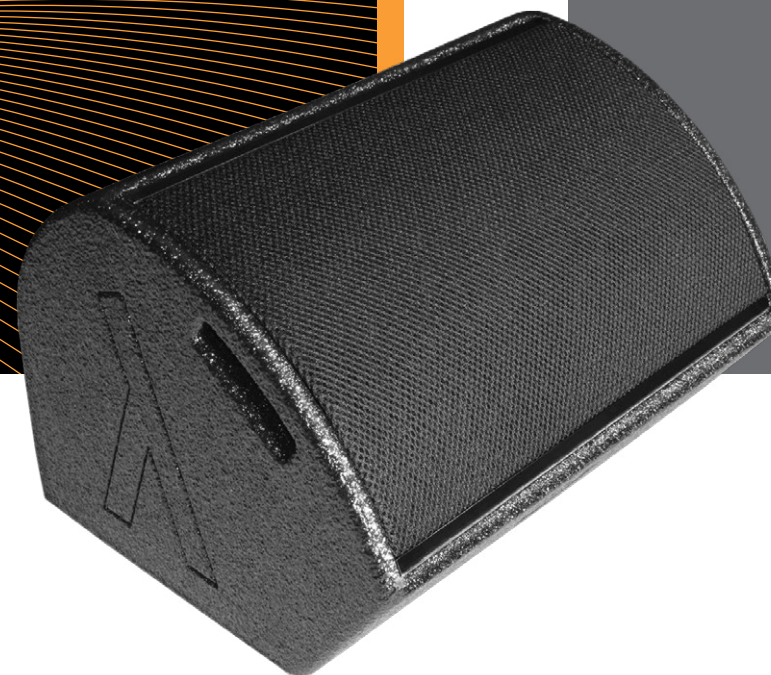




ALWAYS A WAVELENGTH AHEAD.

CX-1A MONITOR





DESCRIPTION

The 2-way active monitor CX-1A incorporates due to its compact construction effortlessly into any stage design, nevertheless it impresses through its performance.

The DSP-driven amplifying unit contains two generously dimensioned amplifiers which supplies sufficient bi-amping performance to the 8" coaxial chassis. The particularity: Up to two passive bi-amped operated CX-1B can be connected.

Concentrically aligned, the high-frequency driver is coupled by a pole piece hole directly onto the conically sprawled cone. By this, the rotation-symmetrical radiation characteristic of 100° can be exemplarily controlled up to the super-high frequency range.





LAMBDA LABS

FEATURES

The round shape of the enclosure isn't just an optically attractive feature, but rather the result of an extensive geometric analysis to suppress standing waves.

- True Single Point Source
- Symmetrical coverage
- Intelligent rigging hardware EPS
- Adjustable tilt angle flange mount
- DSP controlled amplifying unit
- Bi-amped output for CX-1B





APPLICATIONS

Due to the low Helmholtz-adjustment, the CX-1A is predestinated for full range applications and can be combined perfectly with the MF-15A for higher level requirements.

- Stage monitor
- Gala events
- Speech reinforcement
- Theatre / Auditoriums
- Portable PA for bands / DJs
- Fixed installations Clubs / Discos



PERFORMANCE

System Configuration

High power 2-way coaxial monitor
True Point Source

1 x 8" high excursion 2" VC driver
1 x HF-compression driver with
polyamide diaphragm and 1.7" VC

Electronics

800W + 200W RMS amping power

Signal Processor

24bit ADC/DAC, 48kHz samplerate

Frequency Response

80-20000Hz (+/- 3dB)

Coverage Angle

100° horizontal x 100° vertical

Monitor Angle

35°

Crossover Frequency

2000Hz

Sensitivity

94dB / 1W / 1m

Connection

XLR in / out, Neutrik NL4 Speakon out,
Powercon in / out





PHYSICAL

Enclosure	Rigid braced construction of special 12mm lightweight-wood	
Finish	High-density polyurethane-coating Black	
Front Cover	Weather-resistant front fabric on coated 1.5mm perforated steel	
Dimensions	Inches	Millimeters
Height	14.8	376
Width	11.3	288
Depth	11.8	300
Weight	Pounds	Kilograms
	18.5	8.4

