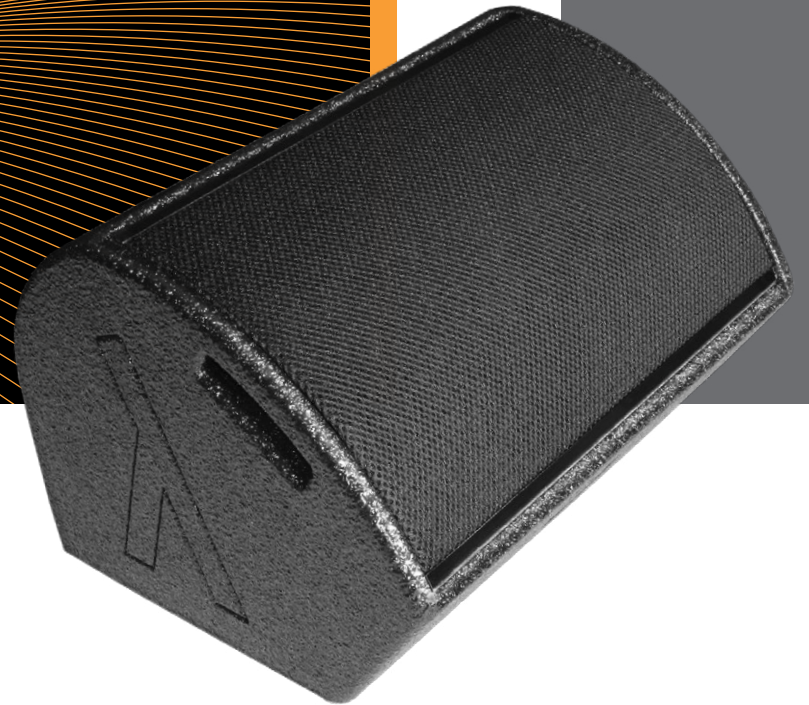




ALWAYS A WAVELENGTH AHEAD.

# CX-1B MONITOR





## DESCRIPTION

The 2-way passive monitor CX-1B regards itself as optional and flexible support to the CX-1A, either on stage or on fixed installations.

Up to two CX-1B can be connected to a CX-1A. During the bi-amped operation, the 8" coaxial chassis is supplied through a quadripolar ready-made connection cable by the DSP-driven and amplified audio signal of the CX-1A.

Concentrically aligned, the high-frequency driver is coupled by a pole piece hole directly onto its conically sprawled cone. By this, the rotation-symmetrical radiation characteristic of 100° can be exemplarily controlled up to the super-high frequency range.





## FEATURES

The round shape of the enclosure isn't just an optically attractive feature, but rather the result of an extensive geometric analysis to suppress standing waves.

- True Single Point Source
- Symmetrical coverage
- Intelligent rigging hardware EPS
- Adjustable tilt angle flange mount
- Ergonomic handles
- Bi-amped operation with CX-1A





## APPLICATIONS

Due to the low Helmholtz-adjustment, the CX-1A is predestinated for full range applications and can be combined perfectly with the MF-15A for higher level requirements.

- Stage monitor
- Gala events
- Speech reinforcement
- Theatre / Auditoriums
- Portable PA for bands / DJs
- Fixed installations Clubs / Discos





LAMBDA LABS

## PERFORMANCE

<b>System Configuration</b>	High power 2-way coaxial monitor True Point Source 1 x 8" high excursion 2" VC driver 1 x HF-compression driver with polyamide diaphragm and 1.7" VC
<b>Power Handling</b>	400W + 100W RMS amping power
<b>Frequency Response</b>	80-20000Hz (+/- 3dB)
<b>Coverage Angle</b>	100° horizontal x 100° vertical
<b>Monitor Angle</b>	35°
<b>Crossover Frequency</b>	2000Hz
<b>Sensitivity</b>	94dB / 1W / 1m
<b>Connection</b>	2 x Neutrik NL4 Speakon in / out
<b>Impedance</b>	Lowmid 16Ω / High 16Ω





LAMBDA LABS

## PHYSICAL

<b>Enclosure</b>	Rigid braced construction of special 12mm lightweight-wood	
<b>Finish</b>	High-density polyurethane-coating Black	
<b>Front Cover</b>	Weather-resistant front fabric on coated 1.5mm perforated steel	
<b>Dimensions</b>	Inches	Millimeters
<b>Height</b>	14.8	376
<b>Width</b>	11.3	288
<b>Depth</b>	11.8	300
<b>Weight</b>	Pounds	Kilograms
	15.9	7.2

