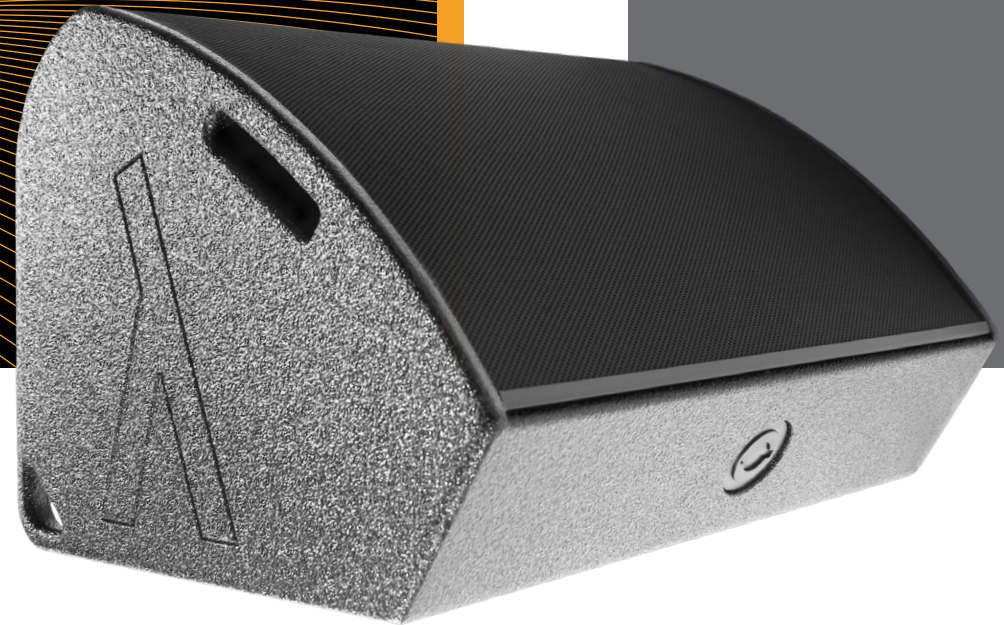




LAMBDA LABS

ALWAYS A WAVELENGTH AHEAD.

CX-3A MONITOR





DESCRIPTION

The active 2- way monitor CX-3A has two different monitor angles and qualifies itself through its extended low frequency range as a premium choice for the professional musician.

Especially on stage, numerous advantages arise from the use of a coaxial speaker arrangement. It allows an algebraic summation of the two frequency ranges in any listening angles. This also opens new perspectives for near to medium throw applications in installation projects.

The shape of the 15" lowmid unit is optimized to achieve a well controlled coverage pattern for the beryllium high frequency driver. The transmission behaviour of the loudspeaker ensures largest possible gain before feedback.





LAMBDA LABS

FEATURES

Beryllium distinguishes through its unique physical properties of high mechanical stiffness as well as a superior damping of material eigenmodes. The diaphragm surface of the beryllium high frequency driver oscillates in phase without partial brake-up vibrations. This significant benefit shows up not only in spectral decay, but also lowers intermodulation distortion essentially.

- True single point source
- Beryllium high frequency driver
- Intelligent rigging hardware EPS
- Adjustable tilt angle flange mount
- DSP controlled amplifying unit
- FIR filter equalization





APPLICATIONS

The CX-3A features an axial symmetric coverage pattern, which excels in respect to a full left/right symmetry for applications on stage.

- Stage monitor
- Sidefill / Drumfill
- Clubs / Discos / DJ monitor
- Speech reinforcement
- Portable PA für bands / DJs
- Fixed installations





PERFORMANCE

System Configuration	High power 2-way coaxial monitor True point source 1 x 15" high excursion driver with 3" VC 1 x HF-compression driver with 4" VC beryllium diaphragm
Electronics	800W + 200W RMS amping power
Signal Processor	24bit ADC/DAC, 48kHz samplerate
Frequency Response	60-20000Hz (+/- 3dB)
Coverage Angle	75° horizontal x 75° vertical
Monitor Angle	35° / 58°
Crossover Frequency	800Hz
Sensitivity	99dB / 1W / 1m
Connection	XLR in / out, Powercon in / out





LAMBDA LABS

PHYSICAL

Enclosure	Rigid braced construction of special 12mm lightweight-wood	
Finish	High-density polyurethane-coating Black	
Front Cover	Weather-resistant front fabric on coated 2mm perforated steel	
Dimensions	Inches	Millimeters
Height	24.7	627
Width	20.1	511
Depth	16.5	420
Weight	Pounds	Kilograms
	50.7	23.0

